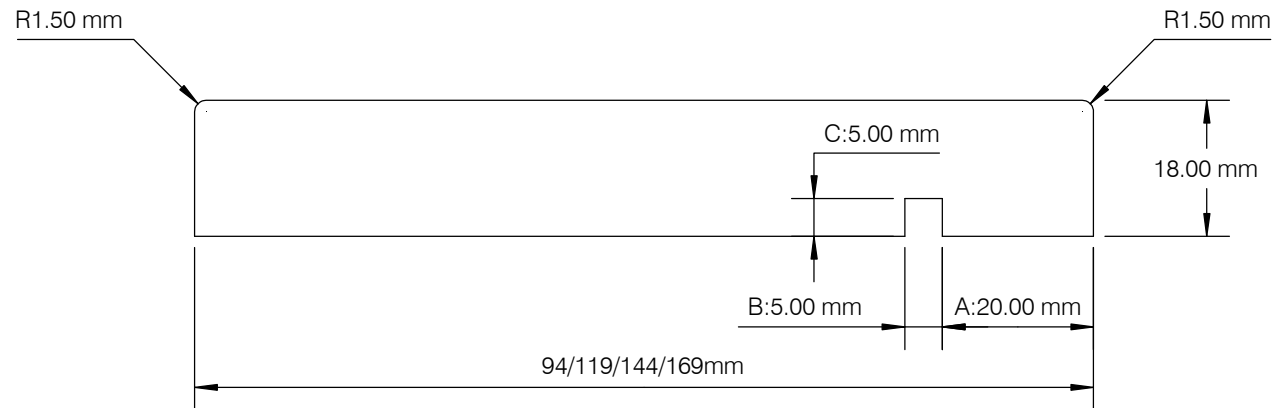


Place SAM 04T1 profile block on side spindle 2.
 Place SAM 04T2 profile block on side spindle 3.
 Place 5mm PCD groover on the last bottom spindle.



Dual Purpose SAM04/SAM5059

PRINTED COPY UNCONTROLLED

| | |
|-----------|--------------|
| MOULDER | ANY |
| PASSES | 1 |
| DRAWN BY | Bart Sobecki |
| REV: | 1 |
| DATE | 09/03/2023 |
| AUTH: | |
| SCALE | 1:1 |
| TOLERANCE | +/- 0.5MM |



Newpark Industrial Estate
 Greystone Road, Antrim
 BT41 2RU
 T: +44 (0)28 9442 8288 F: +44 (0)28 9442 8244
 E: team@samonline.co.uk
 W: www.samonline.co.uk

| | |
|----------|--|
| PROFILE | |
| SAM 5383 | |