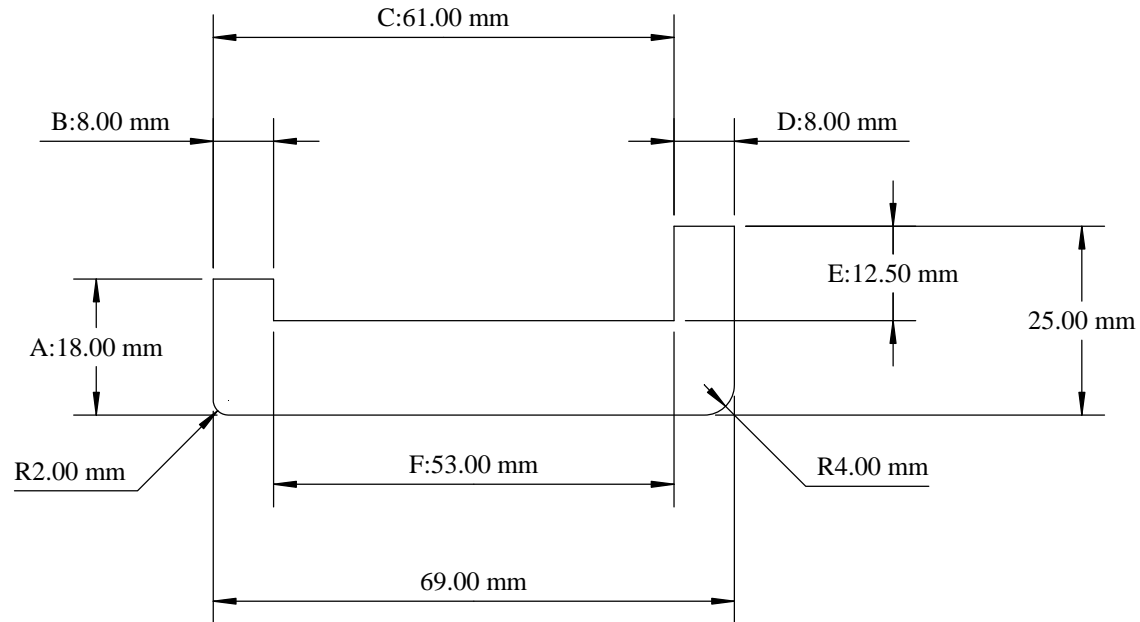


Place SP 1447 T2 profile block upside down on side spindle 2.

Place SAM 2611 profile block on side spindle 3.

Place 8-15mm adjustable groover on the first top spindle set to produce 8.00mm x 7.00mm deep rebate.

Place 34-62mm adjustable groover on the second top spindle, set to produce 53.00mm x 12.50mm groove.



PRINTED COPY UNCONTROLLED

AREA MACHINED AWAY 722.82 SQMM.

| | |
|-----------|------------|
| MOULDER | 3,4,5,6,7 |
| PASSES | 1 |
| DRAWN BY | S McMaster |
| DATE | 28/06/16 |
| SCALE | 1:1 |
| REV: | 1 |
| AUTH: | |
| TOLERANCE | +/- 0.5MM |

SAM MOULDINGS

Newpark Industrial Estate Greystone Road Antrim BT41 2RU
Tel : (028) 9442 8288 Fax : (028) 9442 8244

Website: www.sammouldings.co.uk Email: info@sammouldings.co.uk

PROFILE

SAM 4017