

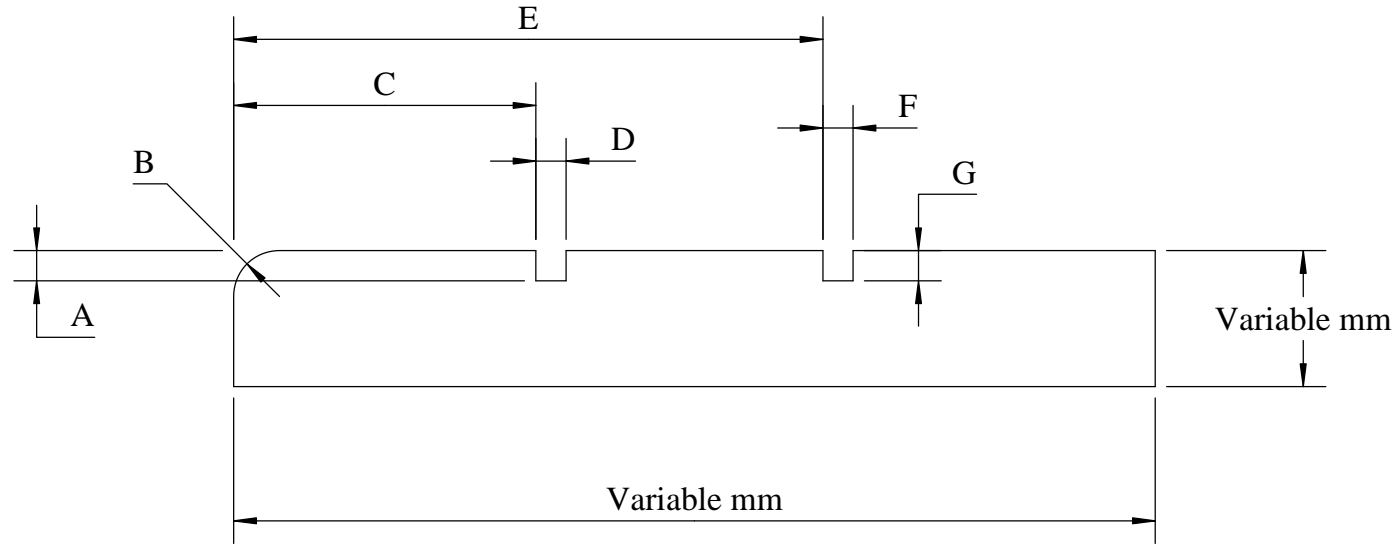
Place profile block on side spindle 2. To suit DIM B.

Place SAM 01 profile block on side spindle 3.

Place adjustable Groover to suit DIM C on the first top spindle, and set to DIMD x DIMA deep Groove.

Place adjustable Groover to suit DIM E on the second top spindle, and set to DIMF x DIMG deep Groove.

A	mm
B	mm
C	mm
D	mm
E	mm
F	mm
G	mm



PRINTED COPY UNCONTROLLED

DIM B: (PLEASE CHECK IF RADIUS IS AN AVAILABLE SIZE!)

AREA MACHINED AWAY = (DxA)+(FxG)+(AREA FOR ROUND).

MOULDER	3,4,5,6,7
PASSES	1
DRAWN BY	S McMaster
REV:	1
DATE	25/02/09
AUTH:	
SCALE	1:1
TOLERANCE	+/- 0.5MM

SAM MOULDINGS

Newpark Industrial Estate Greystone Road Antrim BT41 2RU
Tel : (028) 9442 8288 Fax : (028) 9442 8244

Website: www.sammouldings.co.uk Email: info@sammouldings.co.uk

SAM 2194