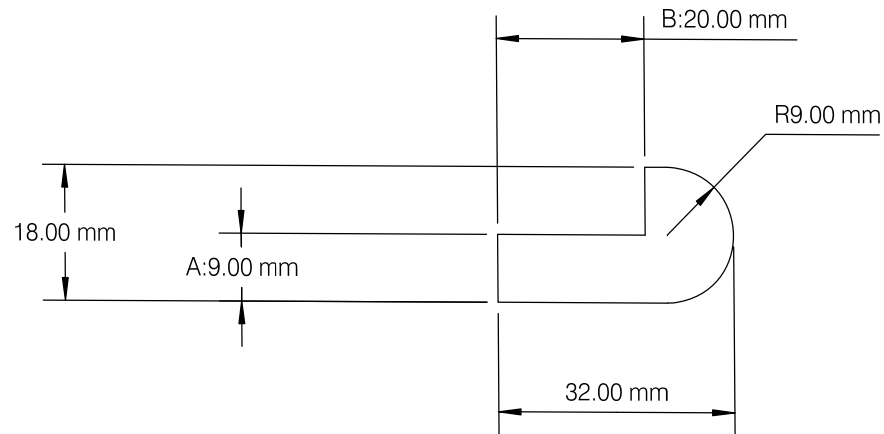


Place SAM 01 profile block on side spindle 2.
 Place SAM 50 (18mm) profile block on side spindle 3.
 Place 12.6-24mm adjustable groover on the first top spindle, set wider than 20mm. Set to produce 20.00 x 9.00mm deep rebate.



PRINTED COPY UNCONTROLLED

AREA MACHINED AWAY: 236.72 SQMM

MOULDER	3,4,5,6,7
PASSES	1
DRAWN BY	S McMaster
DATE	18/06/2019
SCALE	1:1
REV:	1
AUTH:	
TOLERANCE	+/- 0.5MM

SAM[®]

Newpark Industrial Estate
 Greystone Road, Antrim
 BT41 2RU
 T: +44 (0)28 9442 8288 F: +44 (0)28 9442 8244
 E: team@samonline.co.uk
 W: www.samonline.co.uk

PROFILE
 SP 502

DRAWN BY
 DATE
 SCALE

S McMaster
 18/06/2019
 1:1

REV: 1
 AUTH:
 TOLERANCE
 +/- 0.5MM