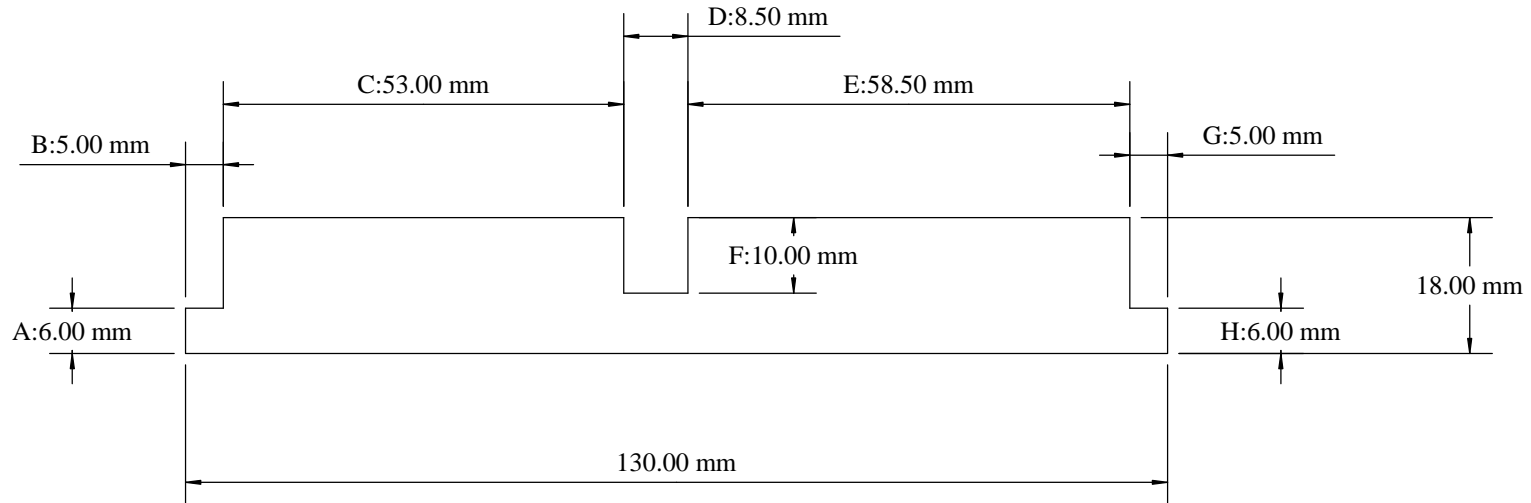


Place SAM 01 profile block on side spindle 2.  
 Place SAM 01 profile block on side spindle 3.  
 Place 8-15mm adjustable groover on side spindle 4, set wider than 12.00mm. Set to produce 12.00 x 5.00mm deep rebate.  
 Place 8-15mm adjustable groover on side spindle 5, set wider than 12.00mm. Set to produce 12.00 x 5.00mm deep rebate.  
 Place 8-15mm adjustable diamond groover on the first top spindle, set at 8.50mm. Set to produce 8.50 x 10.00mm deep groove.



PRINTED COPY UNCONTROLLED

AREA MACHINED AWAY 205 SQMM.

MOULDER	4,6
PASSES	1
DRAWN BY	S McMaster
DATE	12/12/13
SCALE	1:1
REV:	1
AUTH:	
TOLERANCE	+/- 0.5MM

# SAM MOULDINGS

Newpark Industrial Estate Greystone Road Antrim BT41 2RU  
 Tel : (028) 9442 8288 Fax : (028) 9442 8244

Website: [www.sammouldings.co.uk](http://www.sammouldings.co.uk) Email: [info@sammouldings.co.uk](mailto:info@sammouldings.co.uk)

## SAM 3338

PROFILE

DRAWN BY

S McMaster

REV: 1

DATE

12/12/13

AUTH:

SCALE

1:1

TOLERANCE  
+/- 0.5MM